

The Pleasures of a Garden

“How lovely to have a big garden”
Our friends and relations all say
“How lovely to sit there in quietness”
And they heave an envious sigh
At the thought of serene meditation
Iced drinks in a chair on the lawn.
Poor innocent fools and non-gardeners
They really don’t know they’ve been born!
For a gardener will take a rest **next** week
It’s **tomorrow** he’s taking his ease
Later he might take a breather
But just now he’s staking his peas!
Or mulching the roses, or hoeing,
Or doing a quick summer prune,
Or digging, or planting, or....a sit down?
He might as well ask for the moon!

Copied from “Popular Gardening” August 1974

Weather April 2019

At the beginning of April it was all change again with the blackthorn coming out in bloom the weather returned to being cold and we had blackthorn winter, this occurs nine years out of ten so it is expected. However in the middle of the month the temperature started to rise and over the Easter weekend we had record temperature of 23 degrees. The last week a low pressure came over us but the amount of rain we had didn’t amount to much. The rainfall for the month only came to .50 inches giving a total for the year so far of 4.95 inches.

Russell Ling



*“To the world, you may be one person,
but to one person you may be the world”*

A tribute to Lieutenant Colonel Geoffrey Mason MBE.

Geoffrey joined the army in 1944 when he left school and he was commissioned the next year into the Indian Army. He was there during the Independence and witnessed the rioting which took place, he also told me that he had slept on one of the minarets of the Taj Mahal. In 1950 he served in Malaya helping to deal with the bandits, then he went to Hong Kong because there was a serious threat from China. From there he went to Austria when it was still under the Allies occupation, then to Egypt during the Suez crisis.



He did leave the army but then re-joined again and one of his most notable achievements was the founding of the British Army Training establishment in Kenya and it was for this that he was awarded the MBE. He ended his time in the army at Colchester where he was involved with the organising of Court Martials.

The above is only a synopsis of the various events that he was involved in during his life in the armed forces, he was a dedicated efficient officer and greatly respected by all who served with him.

Geoffrey will always be remembered in Otley for the many projects that he was involved in, one of which was the Best Kept Village Competition which he masterminded despite some opposition and we came second being beaten by Grundisburgh. He was also one of the founder members of the Church Preservation Trust and undertook the task of applying for Charitable Status and all the other paperwork that was required. Geoffrey was instrumental in reinvigorating the Friendship Club of which he became President. When the lead on the Church Tower roof had to be replaced the flagpole was in a poor condition. Geoffrey obtained a flagpole and soldiers from the Colchester Garrison who erected it for us. He was very much involved in the British Legion and made sure that the poppies were delivered to each household.

He had been a Parish Councillor and served on the Parochial Church Council. I am sure that he will be best remembered for his persistence in getting a War Memorial erected on the Post Office corner. This entailed obtaining a grant and helping to raise the required additional funds for the project. John Jay helped with

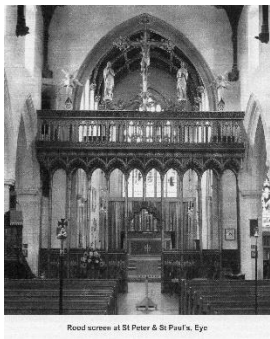
the research to make sure that all the names of the fallen in the two World Wars were inscribed on it.

It was sad that he suffered with his health during the last few years of his life but never complained and it certainly didn't let it get him down.

Russell Ling

Rood Screens in Churches

The most striking difference between a Suffolk Parish Church before the Reformation, and one after it, is the great rood screen. Literally a beam at the eastern edge of the nave separating the nave from the chancel which supported a large crucifix bearing the crucified Christ flanked by his mother and St John. These were intricate structures, the purpose of which remains unclear. However it seems they must have been an important part of Catholic worship otherwise it is hard to see why they were ordered to be removed in 1531. They were lit either by candles or strategically placed window lights. It is believed the screens were provided by the congregation mainly in the period 1436-1546 – they were abolished in 1547.



Rood screen at St Peter & St Paul's, Eye

In a good 25% of Suffolk churches the base of the rood screen remains. In Otley the access to the rood can be seen to the left of the pulpit – the access to the stairway now blocked up. It is believed that the rood beam after removal was incorporated in the structure of Church House. In the late 19th and early 20th century Anglo-catholics under the influence of the Oxford Movement enthusiastically restored rood screens; in several cases, they completely reconstructed them. A good example is Ninian Compers work at Eye shown in the picture.

With thanks to the Suffolk Historic Churches Trust

Otley & District Gardening Club

I know some of you will be thinking, “Where’s the Reluctant Gardener gone?” “Who’s this person?”

So here's a little bit about me... My names Phil Pollard and I'm the new chairman of The Otley and District Gardening Club. Having studied at Otley Agricultural College in recent years, qualifying in Floristry and getting my RHS in Horticulture, I'm probably quite suited to my new role. But... this is my first time as chairman of an organisation. So, what do I call myself?? Alan had his alter ego, what will be mine? Having given it some consideration, I've plumped for "The Green Gardener". I enjoy gardening very much, I have green fingers, and I'm concerned about Green issues that affect our planet and local environment. This also covers the fact I'm new to all this malarkey. I hope that I can follow in Alan's footsteps and thoroughly entertain you with my stunning wit and gardening wisdom. (haha) So here goes nothing...



Our yearly visit this year is to Kew Gardens on 12th June and we'll be leaving at 8:30am from Otley Village Hall. Parking for the day is available on the field by the scout hut. We have a few spare places going. The price is £25 including entry to Kew and the coach trip (luckily both there, and back).

We'll be having a plant stall at the Blossom Appeal event at Otley Hall on 16th June. Entry is free and Afternoon Tea will be available to those who would like it. Please come along and support this great cause for dignified Breast Cancer Care in Suffolk.

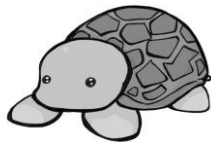
Our next Gardening Club meeting is 2nd September from 7:30pm. Everyone is welcome, but if you'd like to become a member, please get in touch for information with myself or our Club Treasurer Issy Lincoln. I will let you all know what the topic is for Septembers meeting nearer the time.

The Green Gardener, Phil Pollard

Turtle Mugging

A turtle is mugged by three snails.

When asked by police to give a description of what happened, he replies, "I don't know, it all happened so fast!"



NEWS FROM OUR CHURCHES

ASHBOCKING

At the time of writing the Ashbocking quiz has yet to take place but ticket sales are going well, and we are hoping for a good night, stirring up the little grey cells. A full report next month, but thanks to all who are supporting the event.



Also, to say that our new tap which is now sporting a dog bowl beneath for thirsty mutts, will be a great help for this and future events. I can now get rid of a few of the many water carriers littering up our garage.

The coffee morning this month is on 7th June, hosted by Jan and Jon Bates at 4, Ashley Grange, at 10:30am. Parking is available next door at Hawthorns.

Our next Sunday service is a family communion service on the 9th June, 11:00. Please join us, everyone welcome.

Church cleaning rota is Duncan and Yvette Bray. We have a gap in the rota for July, so if anyone feels they could clean, please let me know.

The Wednesday evening home group which meets on the 2nd and 4th Wednesday of the month has had to cancel the session on 12th June due to people being away. However, the 26th June will go ahead at Sarah and Steve Wilson's home, Eastbrook House, The Green at 7:30pm.

Knit and Stitch will be held on Monday 3rd June at Brenda Forster's House, Little Chimneys The Green, at 10:00am. Thanks to Brenda for stepping in. The next meeting on the 17th June will be at Hawthorns as usual, at 10:00am.

Linda Pollard

CLOPTON

On 18th April David Stanford tolled the tenor bell at Clopton for seven minutes in response to the Archbishop of Canterbury's request to ring, offering solidarity and support to the people of France following the



devastating fire at Notre Dame Cathedral. Hundreds of bells nationwide were rung.



We send our sincere sympathy to Barbara Chapman and family on the death of her husband Johnny. Barbara and Johnny married in Otley church in 1966.

In the early 1980's they moved to Potash Farm, Clopton with their three children, Mark, Sarah and Lucy.

Johnny worked on farms from when he left school and was hard working and well respected. The church was full to capacity for his funeral.

Arthur and John Barham have looked after our churchyard for 56 years. They have reluctantly decided that it is time to retire! We held a tea party for them in the church and gave them framed certificates and rose bushes in appreciation for all their hard work.

Unfortunately due to circumstances beyond our control this years Brass Band Concert has had to be cancelled, but we have been assured of a concert for 2020. In the meantime we are planning an exciting Exhibition and Sale - 'Hobbies, Crafts and Skills'- to be held in Clopton Church over the weekend of August 31st and September 1st. Details in July's Signpost.



We hope that you can join us at Thamaniya, Shop Road, Clopton on Saturday 29th June from 2.30 pm onwards for our annual Strawberry Tea.

The Hobbies Morning is on June 5th from 10am until noon, everyone is very welcome.

The Coffee Morning will be on June 19th from 10am until noon. It will be hosted by June Hughes who has her 90th birthday on 6th June! Come and join us.

Doris Main

"Happy 90th Birthday June Hughes, have a wonderful day"



OTLEY

A lot of people attended the Easter service, including some families, which was good to see. The church was beautifully decorated with spring flowers and we sang the great Easter hymns. it is a wonderful season.

The Scouts and Cubs were on parade for the family service in May which was about Christian Aid. After a competition between Clare (blindfolded) and Martin, the Scout Leader, counting sweets, illustrating expectation, Mark spoke about Sierra Leone and what a hard life it is for girls there. They are expected to do household chores early before they go to school and again afterwards, and many more boys than girls actually attend school, which gave us all plenty to think



about. Clare gave a blessing to our grandson Benjamin Rogerson which was special to us, his family, and also called the banns of James McCallum and Catherine Soames who are getting married here in August, and they were in church to hear them, so it was all go! The collection came to £187-53 for Christian Aid.

The Progressive Dinner will be taking place on 8th June, in aid of church funds, and sixteen couples are taking part. Vanessa says it was a late decision to hold it but now she is well on her way to organising it, and we know it will be fun.



We are sad to say that Geoffrey Mason has died after a long period of ill health. Russell has written a full tribute to him but he was a faithful member of the church for many years and supported everything in the village. His funeral was memorable with his niece playing the violin, James giving an excellent appreciation of Geoffrey's life, and Sue had filled the church with flowers in his Regimental colours. We send our condolences to his family.

Monica Taylor has also died at a great age. She moved to Grundisburgh a few years ago but for a long time she rang the church bells here, and offered the ringers hospitality on New Year's Eve during their long ringing session. A quarter peal was rung in her honour on the day of her funeral. We send our sympathy to her daughters and grandchildren.

The next monthly coffee morning will be held on Thursday 13th June at Grange House, the home of Russell Ling.

Rose Rogerson

Village diary

6th June Friendship Club - coffee morning at Grange House 10.30am
8th June Progressive Dinner - St Mary's PCC
16th June Otley Hall Gardens Open - The Blossom Appeal
20th June Friendship Club - coffee morning at 10 Newlands
23rd June Messy Church – Grundisburgh Green
27th June Community Lunch at The White Hart
6th July Otley Fete - Community Council
Church flowers: Vanessa Ling

SWILLAND

Our Easter Day service was well attended. Thank you to Fred for taking it and playing the organ. The church looked lovely with lots of fresh flowers.

Our next coffee morning is on 1st June at Gina Wilden's house. Do come and join us.

Ann Kent

Flower Rota

2nd-9th June Gill Reidy
16th-23rd June Jackie Williams
30th June – 7th July Ann Kent

OUR FASCINATING LANGUAGE

‘I Heard It On The Grapevine’

To hear something ‘On the Grapevine’ means to have heard something through gossip & rumour while remaining unaware of the true source. It's fairly obvious that the origin of the expression had nothing to do with real grapevines. It comes from a means of sending information that pre-dates the American Civil War. Samuel Morse (he of Morse Code fame) invented the telegraph in America & first used it in a



demonstration to Congress on May 24th. 1844. The enthusiasm was so great for this new system of communication that companies all across America rushed to put up telegraph lines, often cutting many corners. In 1859 a Colonel Bee began work on a line between Virginia City, Nevada & Placerville, California. To save time & money the lines along the mountainous parts of the route were strung on trees instead of poles. The natural movement of trees soon pulled & stretched the line, leaving it coiled & tangled & wound along the ground in many places, resembling the trailing California wild grapevines. Bee's telegraph was notoriously unreliable due to falling trees, avalanches etc. Messages were frequently delayed & the grapevine telegraph became the butt of jokes & a symbol of outdated & incorrect information.

RUSSELL LING REPORTS

There is one final reason that fields were left fallow in the past and that was to enable the roots of pernicious weeds such as couch grass and bell bine to be destroyed. There were no chemicals to eliminate any weeds before WW2 although experiments were being carried out. In order to kill the rhizomes of these weeds it was necessary to deprive them of water and dry them out and this was achieved by cultivating the field to a depth below the roots of these plants. A very heavy duty cultivator was used for this operation which required a considerable amount of power to pull it and this is where the traction engines were used before the large crawler tractor came into use.



After the mole ploughing was completed the field was then cultivated by these machines which left large lumps of exposed soil. These lumps would dry out in the wind and sun and the roots would shrivel and die providing there wasn't a period of prolonged rain. Once this had been achieved the field would then be cultivated in stages to bring the soil back to a manageable state to kill off any broad leaf weeds. Just before harvest the field would be mucked and ploughed and this would then leave the land ready to drill with wheat in the autumn.

Russell Ling

“Happiness never decreases by being shared”



OPEN GARDENS



Witnesham Garden Open for Charity, Sunday 2nd June (12-5pm)
Berghersh Place, Ashbocking Road, Witnesham IP6 9EZ (Car
entrance between North Lodge and Berghersh House on concrete
road to farmyard).

(Admission £4, child free, tea and cake for sale) Most areas are
accessible to disabled visitors. Dogs on leads welcome. There is also a circular
farm dog walk).

The house is accessible on foot from the Swilland turning on to the B1077 as well
as from the footpath from the school, with a short section of road without
pavement. Use the rough avenue (way out) at South Lodge if on foot and walk
down among the trees to the front of the house. The house is also accessible on
foot (NO motor vehicles) from the Green Lane which runs from Henley
(Berghersh Lane). There are also footpaths from Witnesham Church and from
Weyland Road.

All funds raised are in aid of the National Garden Scheme, which supports
Macmillan Cancer Support, Marie Curie, Hospice UK, Carers Trust, Queen's
Nursing Institute, Parkinson's UK, Perennial, MS Society and various mental
health and children's charities.

Berghersh Place offers a peaceful circular walk around a Regency House (not
open) with farm buildings and meadows with some far-reaching views to Henley
and Witnesham. The gardens have been created by the present owners over the
last twenty years. The garden is partly walled with clipped
hedges and has climbing roses, a mound, three ponds, a bog area as well as a large
family garden with shrub and perennial beds.



On Sunday 16 June 2pm - 5pm we will be taking part in The
Blossom Appeal Open Gardens event. Otley Hall have very
kindly agreed to open their beautiful gardens, there will be no
charge, just donations. In addition we will be providing a full afternoon tea and
Otley Gardening Club will also be selling plants and flowers.

The Blossom Appeal aims to raise £2.5m towards a new state-of-the-art facility which will bring all breast services under one roof, so that patients can be imaged, biopsied and see their consultant in one appointment. Currently, patients have to visit three different locations during their care, which means they need to get dressed and undressed several times. With your help we are hoping that we can make a good contribution to enable the appeal to reach their target.

Alyson Chilvers

Smile Lines

Epitaphs found on headstones

In London:

Here lies Ann Mann
Who lived an old maid
But died an old Mann.

In Hartscombe::

On the 22nd of June
Jonathan Fiddle
Went out of tune.

In Wimbourne:

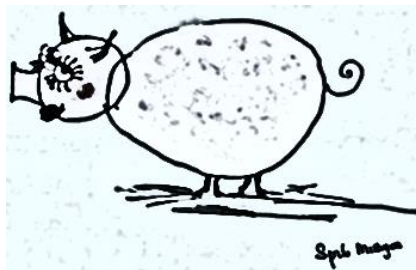
John Penny
Reader if cash thou art in want of any
Dig four feet deep and thou wilt find a penny.

In Pennsylvania:

Here lies the body of Jonathan Blake
Stepped on the gas
Instead of the brake.

In Maryland:

Here lies an Atheist
All dressed up, and no place to go.



A very rash young lady pig
(They say she was a smasher)
Suddenly ran
Under a van –
Now she's a gammon rasher

CHILDREN'S CORNER

Spot the difference – can you find all eight differences?



Down the Stream the Swans All Glide

Down the stream the swans all glide
It's quite the cheapest way to ride.
Their legs get wet,
Their tummies wetter
I think after all
The bus is better

Q: What did the left eye say to the right eye?

A: Between us,



something smells!

Q: Why did the student eat his homework?

A: Because the teacher told him it was a piece of cake!



The WHITE HART
Helmingham Road
Otley
TEL: (01473) 890312

www.thewhitehartotley.co.uk
team@thewhitehartotley.co.uk

"For everything there is a season, and a time for every matter..."

... and as we move into Spring and Summer the pub opens up its sunny beer garden with wonderful views of the Suffolk countryside, where you can enjoy local asparagus, crabs and all the other wonderful taste sensations this area has to offer. When Autumn and Winter approach, we light the fire and cook up game pies, hearty stews and crack open the winter ale. Our community lunch gives you a slap-up meal, including pudding, and a chance to meet your neighbours for a mere £6 on the last Thursday of every month and there are Ukulele, Knitting, Cribbage, Book Clubs, all sorts of things to get involved with. See our website, give us a ring or pop in for more details.

The Pub is the Hart of the Village...

Graham Fowler Painting and Decorating



Top quality finish at a very reasonable price.

All aspects of interior and exterior redecoration.

Many years' experience in the trade with reference's available.

Please contact for a free estimate:

01728 685448

Mobile: 07798 832636

E-Mail:

graham.fowler@ymail.com

SPEED STYLE 01473785544
AUTO CENTRE
Check out our Salesroom today: www.speed-style.co.uk



Honda CRV (4x4)
£5,995

Honda Jazz
£5,895

Your local garage at The Crossroads, Ashbocking, IP6 9LA

FREE 10-point
Winter Check

01473 785544

We'll check your car's battery, brakes, bulbs, oil, screenwash, anti-freeze, alternator & tyres
www.speed-style.co.uk
The Crossroads, Ashbocking,

ALL CARS COME WITH 12 MONTHS WARRANTY AS STANDARD

GoodGarageScheme.com

C Ling and Son
Grange Farm, Otley, Ipswich

We sell Point of Lay Chickens, Eggs
Hay, Straw, Shavings, Chicken feed,

Bird seeds and much more.

Tel: 01473 890787



CHRIS HOWARD
PLUMBING AND HEATING

Local, professional and
reliable service

- ◆ All household plumbing
- ◆ Gas boiler install and servicing
- ◆ Hot water cylinders

**Free non committal
quotes**

07749315908

chrisjhoward5@googlemail.com

www.chrishowardplumbingandheating.co.uk

**THE OTLEY VILLAGE STORE, POST OFFICE
and GARDEN SUPPLIES**

CHAPEL ROAD, OTLEY 01473 890257

The Otley Store is a traditional family-owned
village shop which can supply all of your needs.

It is well stocked with a range of groceries,
fresh fruit and vegetables, wine, beers and
spirits, newspapers and magazines, Calor gas
and garden supplies. It also has a lottery
terminal. Weekly home deliveries in the area
are available, Monday-Friday 7.00am-7.00pm,
Saturday 8.00am-5.00pm, Sunday 9.00am-
12.30pm. Follow us on Twitter @otleystore and
Facebook on "The Otley Village Store"

Coastal Building Supplies

7 Wentworth Road
Ransomes Europark
Ipswich, Suffolk
IP3 9SW

01473 320315

Unit 2, Sizewell Crossing
Leiston
Suffolk
IP16 4LW

01728 833453

Riverside Business Park
Dock Lane, Melton, Woodbridge
Suffolk, IP12 1PE

01394 799000

**For all your Timber and Building
material requirements**

Debbie Mobile Hairdresser

25 years' experience.
In the comfort of your own home.

Tel. 01473 890692
Or Mobile
07765193247

YOUR LOCAL HANDYMAN

Providing a friendly, reliable, quality service

SSJ

Specialist in Small Jobs

Based in Ashbocking

Call or email:

Ken Petherbridge

07974 748887

Kenpetherbridge@hotmail.com

**Boots
n
Blades**

GARDEN MACHINERY SERVICE & REPAIRS.

SPRING INTO ACTION IN YOUR GARDEN

WE NOW HIRE GARDEN MACHINERY OUT FOR THOSE ONE OFF JOBS.
ROTOVATOR, SCARIFIER, POST HOLE BORER AND LOTS MORE

VISIT OUR SHOP FOR GARDEN TOOLS, BIRD FOOD/FEEDERS, BOOTS & WORKWEAR

Closed Sundays & Mondays. Open Tue-Fri 9am-3pm, Sat 9am-12pm.

6A MEADOW WORKS BUSINESS PARK, DEBENHAM. IP14 6RP. TEL 01728 860330 EMAIL karen@bootsnblades.co.uk



*Specialising in traditional handcrafted
furniture to compliment and enhance
both country and town houses*

Office: 01473 890509

Mobile: 07750014017

ellis.furniture@virgin.net

~

Ellis Furniture

Dormers, Ashbocking, Ipswich, IP6 9JX

*Superbly crafted with
Timeless elegance*

Florabundant

Unique flowers for any occasion

www.florabundant.co.uk

FREE LOCAL DELIVERY

All your floral needs catered for by an award winning florist. Weddings, Events or Sympathy tributes, and personally created bouquets or arrangements.

Call for information, advice and prices

07880-627984

Phil Pollard

phil@florabundant.co.uk



WOOD FARM HAIR Otley

Hair Salon opening times

Monday	9am – 5pm
Tuesday	9am – 5pm
Wednesday	9am – 5pm
Thursday	9am – 5pm
Friday	9am – 5pm
Saturday	9am – 12 Noon

**Late night
Wednesday and Thursday**

01473 890782

15

Leisure Pool – Private Hire



£30 PER
HOUR
(Max 6 people
& £2.50 for
additional
people)

Enjoy private hire of a beautiful indoor swimming pool, located close to Otley, Grundisburgh and Woodbridge.

- Kept at a constant warm temperature of 31 degrees
- Perfect to chill out with friends
- Floats, rings and toys for children to play with
- Includes endless pool allowing for "open water style" swimming
- Elegant and Comfortable soft furnishings

Come and treat yourself to this oasis and step away from the hustle and bustle of the day to day.

To enquire of make a booking, regular weekly slots available, please contact Donna: 07769536450.

Email donna@swimmatthemill.co.uk Visit www.swimmatthemill.co.uk



GUARANTEED BY THE
RETAIL MOTOR INDUSTRY



EVERGREEN GARAGE CROWFIELD LTD

Gosbeck Road Crowfield Ipswich Suffolk IP6 9TB

ESTABLISHED 38 YEARS

Latest dealer diagnostic equipment for service, repair, engine management and body system electronics
Hunter all four wheel alignment to improve vehicle handling and tyre wear with print-out before and after adjustments

Good tyre selection at competitive prices – Air conditioning service and repair – Routine servicing histories maintained
Attended forecourt service (Fuel/Coal and Gas Cylinders sold)
Modern fleet of courtesy cars – Collection & delivery service available

Telephone: 01473-890377

Website: www.evergreengarage.co.uk

E-mail: jim.davey@evergreengarage.co.uk

Follow us on Facebook and Twitter @Evergreengarag

GIPPING PRESS ADVERT

DISCUSSED WITH
DANNY CUFF @ GP

THE MOON & MUSHROOM INN
voted amongst the
100 Cosiest pubs
in the UK
from the Mail on Sunday

The Mail

Valentines Day 14 February

Food served from 6.00 – 9.00 • Menu on website
Bookings essential

Mothers Day

Sunday 31 March from 12.00 – 4.00

Now taking Bookings

Andy Ottley as ELVIS at The Moon & Mushroom

Mothers Day – 31st of March 2019, 7.00 – 11.00pm

This will be a themed evening with dinner. Please call to book.

Takeaway Fish and Chips from 5pm Fridays

Now Serving Breakfast – Saturday and Sunday – 9am - 11.30am

Email: moonandmushroom@gmail.com

Please call or see our website for details

High Road, Swilland IP6 9LR

Tel: 01473 785320

www.themoonandmushroom.co.uk



Like us on
facebook



@moonandmushroom